

SHARP

AR-M201

Digital Multifunctional System



Network-Capable Multifunctional Performer in a Compact Design



COPY

PRINT

NETWORK PRINT
OPTION

COLOUR SCAN

NETWORK COLOUR SCAN
OPTION

SHARPEDESK

FAX
OPTION

The AR-M201 is a powerful performer with a space-saving design. Speedy copying and printing functions, including duplexing, and vivid colour scanning deliver high-quality images, while Sharpdesk software makes the integrated desktop management of documents part of this compact package. For added efficiency and function, the AR-M201 can be teamed up with options like the Fax Expansion Kit. Furthermore, adding the Network Expansion Kit lets you integrate the AR-M201's powerful features into your office network for a whole new level of productivity.



COPYING

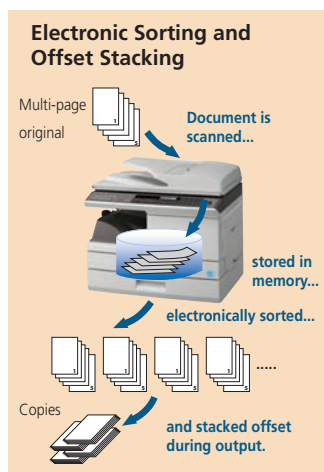
Speedy Copying and Quick First Copy Time

The AR-M201 has a quick first copy time of **8.0 seconds** to save valuable time when performing multiple short-run jobs. Also, with a continuous copy rate of **20 cpm**, you can do more copy jobs in less time.



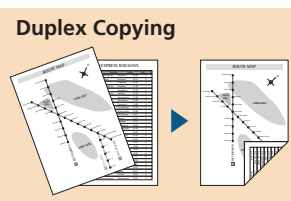
Electronic Sorting and Offset Stacking

The AR-M201's Scan Once/Print Many (SOPM) function does one scan of multiple-page documents and stores them in memory for making up to **99 copies** of each page. The Electronic Sorting function then **automatically collates** multiple sets of copies in page order without the aid of a sorter. The AR-M201 also stacks each set slightly shifted apart from the previous (**offset stacking**) for easy retrieval. All this adds up to speedy copying that boosts productivity even for large-volume documents.



Efficient Duplex Copying and Optional RSPF

The AR-M201 can automatically produce **duplex copies** from one- or two-sided originals. This reduces paper costs and helps save filing space. Duplex copying is even more productive when used together with the **optional RSPF** (reversing single pass feeder), which efficiently feeds in up to **50 pages** of either one- or two-sided originals.



Paper Capacity

The AR-M201 comes standard with a 250-sheet paper tray and a 50-sheet multi-bypass feeder. An optional paper feed unit is available for a total paper capacity of 550 sheets.



Superb Image Quality

600-dpi resolution and 256-level greyscale ensure finely detailed reproduction, while **Digital Auto Exposure Control** provides optimum copy contrast. For the best results, users can select **Text mode** for text-only originals or **Photo mode** that gives detailed, high-quality reproduction of photos and delicate halftone images.

Other Key Features

- Wide zoom range from 25% to 400% with 7 preset ratios
- Margin shift, 2-in-1 copy
- Cost-efficient Toner Save mode
- Pre-Heat and Auto Power Shut-Off modes

FAXING (option)

High-Speed Operation

The AR-FX13 Fax Expansion Kit turns the AR-M201 into a 33.6 Kbps **Super G3 fax**. Using JBIG compression technology, the AR-M201 can send an A4 size page in under 3 seconds. You can use the optional RSPF to further boost faxing efficiency. In addition, because **Quick On-Line Transmission** can start dialling and transmitting as soon as the first page is scanned into memory, you can send documents in even less time.



Duplex Transmission and Reception

With the optional RSPF, the AR-M201 scans both pages of two-sided documents and sorts them in memory. The pages are then transmitted in the proper order. Thanks to the built-in duplex module, the AR-M201 can also print incoming faxes onto both sides of paper, thus saving you paper costs.

Other Key Features

- Memory transmission/reception
- Rapid and group dials (18 in total), 100 speed dials
- Long originals up to 500 mm can be sent using RSPF
(Note: Duplex transmission is not possible)

PRINTING

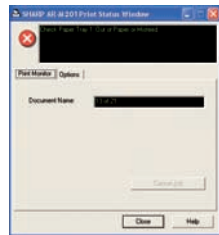
Speedy Printing with Sharp Technology

The AR-M201 is a high-performance printer incorporating Sharp Printer Language with Compression (**SPLC**) technology. SPLC effectively reduces the data size of print jobs, speeding up the data transfer time and printing process while improving overall throughput. Also, the **RIP Once/Print Many (ROPM)** function saves print data in the AR-M201's internal memory and transfers it to output at a quick rate of **20 ppm** in 600-dpi resolution.



Printer Status Window

A Printer Status Window conveniently allows you to monitor important printer information on your PC, including on-line/off-line status, name of the active print job, and machine conditions such as amount of paper or toner.



Printer Status Window

Other Key Features

- USB 2.0 port
- Duplex printing, Pamphlet Style printing
- N-up (2/4), Fit to Page, Watermarks
- Offset output

COLOUR SCANNING

Full-Colour Scanning

The AR-M201 lets you easily scan colour originals in **600 x 1,200-dpi** resolution and use them to create vivid, impressive colour documents or presentation materials. The optional 50-sheet RSPF gives efficient multi-page document scanning.

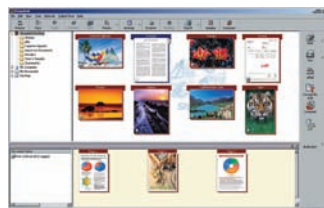
Push and Pull Scanning

Operation is quick and easy—simply press the Scan button, select an application, and press Start (push scan). Up to six pre-registered applications are available, including Sharpdesk, e-mail, Microsoft® Word, OCR, and PC-fax. **Button Manager** allows you to change/assign these destination applications and scan settings. With support for the **TWAIN** standard, the AR-M201 lets you import scanned images to a commercially available TWAIN-compliant application.

Sharpdesk 3.2

Sharpdesk is an original Sharp application that provides integrated desktop management of documents in over **200 file formats**.

Once you scan documents and images, or drag-and-drop existing files on your PC into Sharpdesk, you can view their thumbnail images and organise, edit, and share your documents right on your PC desktop. In addition, **Sharpdesk Composer** combines different types of files into a single document.



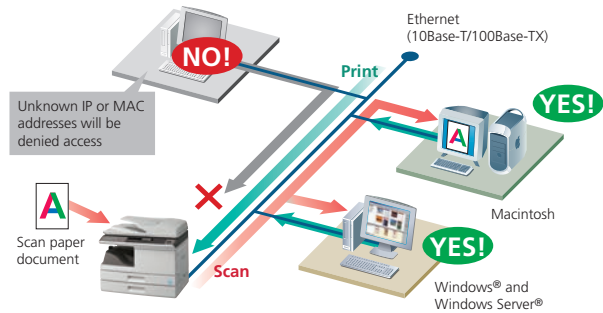
Sharpdesk screen

Network Printing (option)

Secure Network Printing

The AR-M201 supports popular network protocols including TCP/IP and IPX/SPX. The optional AR-NB2A Network Expansion Kit allows easy printer sharing through your office network. The AR-NB2A also supports **PCL** and **PostScript*** printer languages. Plus, with its **IP/MAC address filtering** function, only PCs that have either their IP address or MAC (media access control) address registered are allowed to use the AR-M201.

* Optional AR-PK1N PS3 Expansion Kit is required.



Network Utility Software

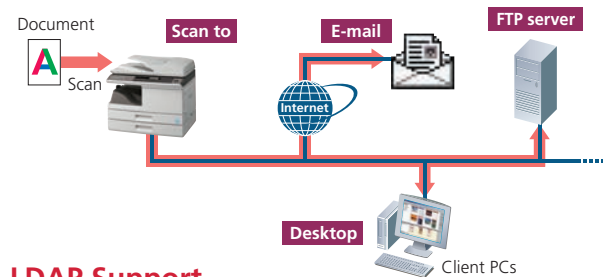
Sharp's original **Printer Administration Utility** software makes printer networks easier to manage by allowing network administrators to customise monitored items and view settings such as the IP address directly from their PC.

Full-Colour Network Scanning (option)

Scan to Desktop, E-Mail, or FTP Server

The optional AR-NB2A Network Expansion Kit turns the AR-M201 into a convenient full-colour network scanner. As easy as making a copy, you can send scanned images anywhere over the network. Scanned files can be forwarded directly to your PC* (scan to desktop), sent as an attachment to any e-mail address over the Internet (scan to e-mail), or stored on a file server where they can be easily accessed from any PC on the network (scan to FTP server).

* Sharpdesk must be installed on the PC.



LDAP Support

The AR-NB2A provides the AR-M201 with LDAP (lightweight directory access protocol) support, which eliminates the need to enter or register an entire e-mail address. Simply select Global Address from the LCD control panel, enter the first few letters of the recipient's name, and the AR-M201 displays a list of possible matches from names and e-mail addresses on your company's LDAP server. After searching, addresses can be stored on the AR-M201 for easy access.



AR-M201 Digital Multifunctional System



SPECIFICATIONS

General

Type	Desktop
Paper size	Max. A4, min. A6
Paper capacity	300 sheets (250 + 50), max. 550 sheets with option
First copy time*1	8.0 seconds
Warm-up time	(Auto Start mode)*2
Memory	64 MB
Power requirements	230 ~ 240V AC, 50/60 Hz
Power consumption	Max. 1.0 kW
Dimensions (W x D x H)	518 x 445 x 298 mm
Weight	Approx. 18.3 kg without developer

Copier

Copy speed	Max. 20 cpm (A4)
Original size	Max. A4
Continuous copy	Max. 99 copies
Resolution	Scan: 600 x 600 dpi (Photo mode) 600 x 300 dpi*3 (AE/Text mode) Print: 600 x 600 dpi
Gradation	256 levels
Zoom range	25% to 400% in 1% increments (50% to 200% using RSPF)
Preset copy ratios	7 ratios (4 reduction + 3 enlargement)
Features	Margin shift, electronic sorting, 2-in-1, offset stack, toner save mode, pre-heat/auto power shut-off modes, duplex copy, scan once/print many

Printer

Print speed	Max. 20 ppm (A4)
Resolution	600 dpi
Interface	USB 2.0
Supported OS	Windows® 98/Me, Windows® 2000 Professional, Windows® XP Home Edition/Professional, Windows Vista®
PDL emulation	Standard: SPLC (Sharp Printer Language with Compression) Option*4: PCL 6/5e, PS3 emulation
Available fonts	80 fonts for PCL, 136 fonts for PS3 emulation*5
Features	Duplex print, RIP once/print many, offset print, status window, N-up (2/4), fit to page, watermarks, image orientation, rotation print, auto paper selection, image adjust, 2-gradation print, binding edge, pamphlet style, auto configuration

Colour Scanner

Scan method	Push scan (via control panel), pull scan (TWAIN-compliant application)
Resolution	600 x 1,200 dpi (setting range: 50 to 9,600 dpi)
Protocols	TWAIN, WIA (Windows® XP and Windows Vista®), STI
Interface	USB 2.0
Supported OS	Windows® 98/Me, Windows® 2000 Professional, Windows® XP Home Edition/Professional, Windows Vista®
Scanner utilities	Button Manager, Sharpdesk 3.2

Network Printing/Scanning (optional AR-NB2A required)

Network interface	10Base-T/100Base-TX
Supported OS*6	Windows® 98/Me/2000/XP, Windows Server® 2003, Windows Vista®, Mac OS 9.x, Mac OS X 10.1 to 10.4.10
Memory	64 MB, expandable to 320 MB with SO-DIMM 256 MB (144-pin)
Network protocols*6	TCP/IP, IPX/SPX (Netware), NetBEUI, EtherTalk (AppleTalk)
Features	Network scan (scan to e-mail/FTP server/desktop), LDAP support, PCL and PS3 emulation*5, Sharpdesk 3.2

Facsimile (optional AR-FX13 required)

Compression method	JBIG/MMR/MR/MH
Communication protocol	Super G3/G3
Transmission time	Less than 3 seconds*7
Modem speed	33,600 bps to 2,400 bps with automatic fallback
Transmission resolution	From Standard (203.2 x 97.8 dpi) to Super Fine (406.4 x 391 dpi)
Memory	2MB flash memory
Greyscale levels	Equivalent to 256 levels
Features	Duplex transmission/reception, memory transmission/reception, rapid and group dials (18 in total), 100 speed dials, long original transmission (max. 500 mm), address book import/export

OPTIONS

	AR-RP9	50-Sheet Reversing Single Pass Feeder (RSPF)
	AR-D33	250-Sheet Paper Feed Unit
	AR-NB2A	Network Expansion Kit (Printing/Scanning)
	MX-USX1/X5	Sharpdesk 1/5-License Kit
	MX-US10/50/A0	Sharpdesk 10/50/100-License Kit
	AR-FX13	Fax Expansion Kit
	AR-PK1N	PS3 Expansion Kit
	AR-PF1	Barcode Font Kit
	AR-PF2	Flash Memory for Downloaded Fonts

*1: When feeding A4 sheets from paper tray, in Auto Exposure mode.

*2: Auto Start mode allows the user to go to reserved copy by pushing the start key while the machine is turning on after being off or in energy-saving mode. Copying starts automatically once the machine has turned on.

*3: Can be changed to 600 x 600 dpi via user setting.

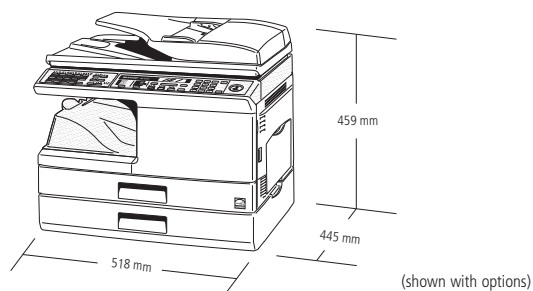
*4: AR-NB2A required. AR-PK1N also required for PostScript printing.

*5: AR-PK1N required.

*6: AR-PK1N required for Mac OS and EtherTalk.

*7: In Super G3 mode, at 33.6 Kbps.

- Design and specifications are subject to change without prior notice.
- Colour variations to products may occur due to printing.
- Some features require optional items. Please consult with an authorised Sharp reseller for details.
- All information and technical details are correct as at machine release date.
- Windows, Windows Vista, and Windows Server are registered trademarks of Microsoft Corporation in the United States and/or other countries.
- All other brand names and product names may be trademarks or registered trademarks of their respective owners.
- The Energy Star logo is a certification mark and may only be used to certify products that have been determined to meet the Energy Star programme requirements. Energy Star is a US registered mark. The Energy Star guidelines apply to products only in the US, Europe, Australia, New Zealand, and Japan.



SHARP

Simply the best.

SHARP CORPORATION OF AUSTRALIA PTY LTD
 ABN 40 003 039 405
 1 Huntingwood Drive, Huntingwood NSW 2148
 PO Box 6827 Blacktown NSW 2148
 Tel: (02) 9830 4600 Fax: (02) 9672 1208
 www.sharp.net.au

Australian Government Endorsed Supplier
 Supporting Australian Business

Distributed by: